

HOTLINE: 097.790.3839

HELI
LIFTING THE FUTURE



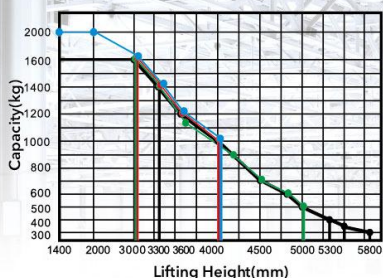
TOP1 FORKLIFT MANUFACTURER AND SALER
IN CHINA FOR CONSECUTIVE 24 YEARS

CDD16/20

Forkover Electric Stacker

Lifting Height : 1400-5800mm

Load Curve



- CDD20-D930
- CDD16-D930
- CDD16-950
- CDD16-350



Advantages

Configuration and Performance

- Electronic power steering system, light and low noise.
- Two-way magnetic valve, three drop speed mode.
- Drive unit floating bodies with patent design.
- AC Driving system, No carbon brush, free maintenance.
- USA CURTIS driving controller.
- Electromagnetic, regenerative braking system.
- Automatic lifting limit, proximity switch, long life.

Safety

- Curve automatic deceleration devices, more safe.
- Vehicle decelerates automatically at higher position.
- Stepless speed control system, safe and quiet.
- Controller with Multiple automatic protection.
- Emergency reversing device/Emergency brake switch.
- High position automatic reduction device.

AC | EPS

Down mode at 3 speeds

Steering automatic deceleration

Truck automatically decelerates while at higher lifting position

Type	Lift height (mm)	Mast type	Outside width between legs (mm)	Inside width between legs (mm)
CDD16-D930	1400/2000/2500/3000/3300/3600/4000	Standard 2-STAGE	550/600/650/685	180/230/280/315
CDD16-950	3700/3900/4200/4500/4700/5000	FULL FREE 3-STAGE		
CDD16-350	5300/5500/5800	FULL FREE 3-STAGE		
CDD20-D930	1400/2000/2500/3000/3300/3600/4000	Standard 2-STAGE		

1. CDD20 Series, Lift height ≤ 2000mm, Load capacity is 2000kg.
2. CDD20 Series, Outside width between forks ≤ 650mm

HELI CDD16/20

Feature					
Model		CDD16	CDD16	CDD16	CDD20
Configuration No.		D930	950	350	D930
Type		Narrow legs	Narrow legs	Narrow legs	Narrow legs
Mast type		Standard 2-Stage	Full free 3-Stage	Full free 3-Stage	Standard 2-Stage
Load capacity	kg	1600	1600	1600	2000
Load center	mm	600	600	600	600
Wheel base	mm	1325	1375	1375	1325
Operating type		Walkie/Stand On			
Wheels					
Wheels type		PU	PU	PU	PU
Wheel quantity Driving wheel/ Balance wheel/Bearing wheel		1/2/4	1/2/4	1/2/4	1/2/4
Dimension					
Standard lift height	mm	1400/2000/2500/3000/ 3300/3600/4000	3700/3900/4200/ 4500/4700/5000	5300/5500/5800	1400/2000/2500/3000/ 3300/3600/4000
Lowered fork height	mm	86	85	85	86
Fork size(length/width/thickness)	mm	1150(1220)/185/55	1150(1220)/185/55	1150(1220)/185/55	1150(1220)/185/55
Overall length	mm	2050/2470	2105/2525	2105/2525	2050/2470
Overall width	mm	856	957	957	856
Max.extend height	mm	1900/2500/3000/3500/ 3800/4100/4500	4200/4400/4700/ 5000/5200/5500	5800/6000/6300	1900/2500/3000/3500/ 3800/4100/4500
Mast lowered height	mm	1185/1535/1765/1980/ 2135/2335/2500	1800/1900/1985/ 2085/2135/2235	2520/2590/2690	1185/1535/1765/1980/ 2135/2335/2500
Min.Turning radius	mm	1580/1990	1630/2040	1630/2040	1580/1990
Min.Aisle width for pallets 800×1200	mm	2180/2580	2230/2625	2230/2625	2180/2580
Min.Aisle width for pallets 1000×1200	mm	2210/2600	2260/2650	2260/2650	2210/2600
Min.ground clearance	mm	30	30	30	30
Performance					
Travel speed,laden/unladen	km/h	5/5	5/5	5/5	4/4.5
Lift speed,laden/unladen	mm/s	130/230	130/230	130/230	90/170
Lowering speed,laden/unladen	mm/s	130/230	130/230	130/230	80/170
Gradeability,laden/unladen	%	5/7	5/7	5/7	5/7
Electrical configuration					
Drive motor/Lift motor/Steering motor	kW	AC1.5/DC3/DC0.15	AC1.5/DC3/DC0.15	AC1.5/DC3/DC0.15	AC1.5/DC3/DC0.15
Battery voltage	V	24	24	24	24
Battery capacity	Ah	280	280	280	280
Brake		Electromagnetic/Regenerative			
Controller		CURTIS			
Weight					
Battery weight	kg	250	250	250	250
Service weight with battery	kg	1240	1578	1610	1240

* Details of specifications and equipment are based on information available at time of printing and may change without notice.

CÔNG TY TNHH XE NÂNG BÌNH MINH

Mr Hoàng: 097.790.3839

Email: hoangnguyen3888@gmail.com

Website: http://xenangheli.com

Trụ sở: Số 763, đường Nguyễn Văn Linh, phường Sài Đồng, quận Long Biên, tp Hà Nội

Chi nhánh: 288/2, Quốc lộ 1A, phường Thời An, quận 12, tp Hồ Chí Minh

Chi nhánh: Khu phố Bình Đường 2, phường An Bình, thị xã Dĩ An, tỉnh Bình Dương

Chi nhánh: Số 1, đường Nguyễn Văn Linh, phường Hải Châu, tp Đà Nẵng

ĐẠI LÝ CHÍNH HÃNG XE NÂNG HÀNG HÉLI